

EQ

Rebirth of an Icon

BY SARA YEOH

Once again joining the dazzling skyline of KL city, the newly reconceived EQ – previously Equatorial – is back in a glossy new skyscraper. Just opened in March, EQ is still in its soft launch period, but we couldn't wait any longer to step into its rose gold lobby to experience the new EQ for ourselves. What we loved was that you could find touches of Malaysian elements embedded in the hotel's interior – from subtle songket details to carved copper panels at the lobby, showcasing Malaysian festival activities from the yesteryear panning the wall like a museum piece. And so, the rest of the EQ experience begins...

DINING AT EQ

One would be spoilt for the gastronomic offerings at EQ, including returned originals like Nipah and Kampachi. Nipah, the hotel's all-day dining spot, serves Pan-Asian cuisine using its preserved recipes that stood the test of time. Feast at Nipah's buffet lunch where you can find fresh seafood and humble Malaysian delicacies like made-to-order roti canai and satay. And what would the dining scene at EQ be without Kampachi – where hotel guests can have an elevated omakase experience at its Hinoki wood sushi counter. Enjoy bubbles and bites at the Bottega bar surrounded by a vault of gold and rose gold Bottega bottles.

SANCTUM WELLNESS

Claim sanctuary on the 29th floor of the building, where you will find a spacious, fully-equipped gym for your metropolitan fitness needs. Or visit Sanctum spa for a retreat to the rainforest-inspired facilities – including a Himalayan salt sauna – and get a massage with the KL skyline surrounding you in one of its biggest therapy rooms. Otherwise, how does a dip in the infinity pool with the KL Tower in your sight sound?

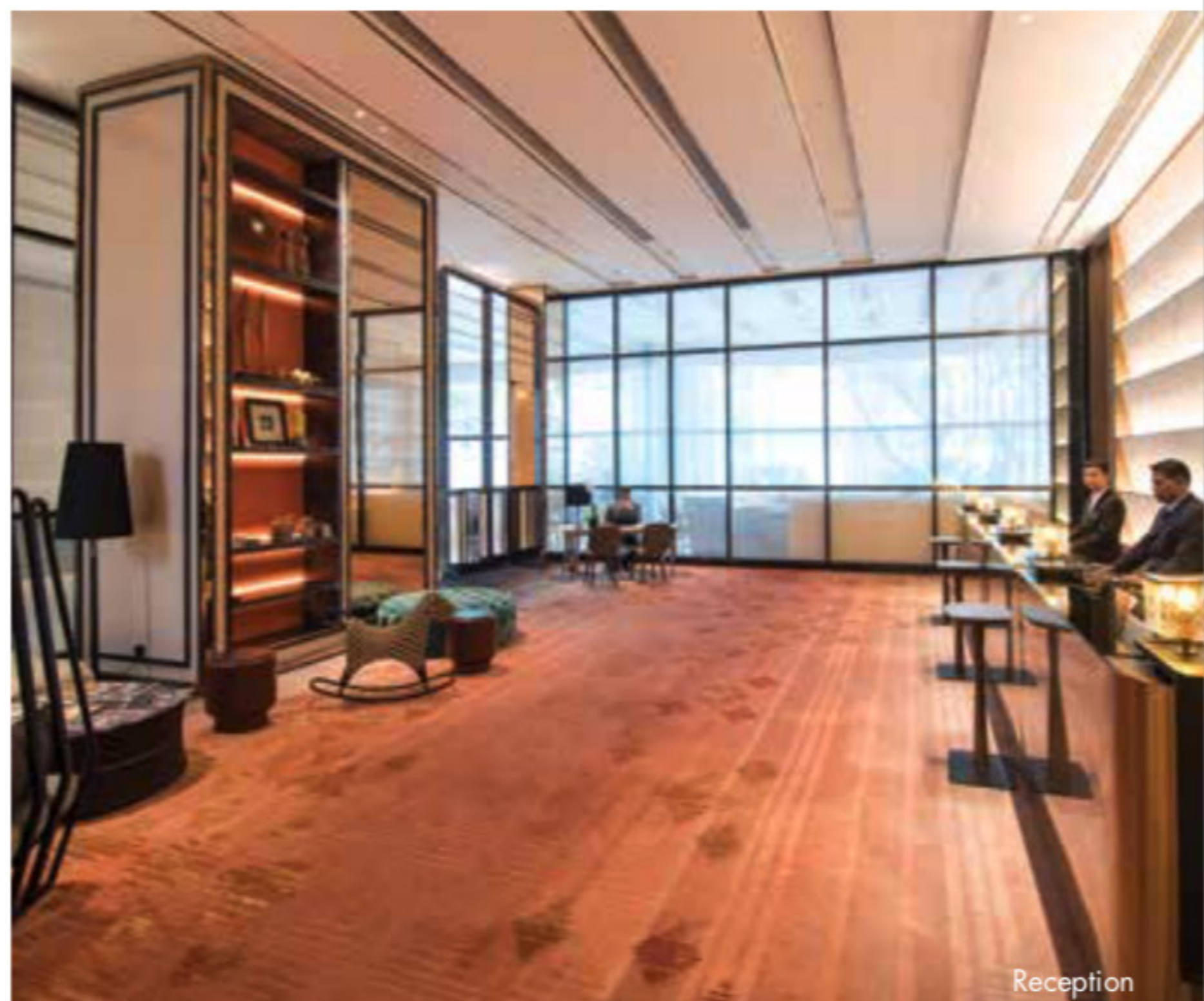
UNEQUALLED ROOMS

Ascend through the rose gold lifts to live the high life at EQ. The contemporary-chic interior in each room takes comfort a notch higher, making a lush space for you to rest. Wake up to the most coveted panoramic views of KL city (I opened my eyes to the Petronas Twin Towers). Rooms are spacious and sophisticated, whether it is a 50sqm premier room or 235sqm presidential suite that you choose for your pied-à-terre.

EQUATOR CLUB

Club floor guests will have access to the Equator Club Lounge privileges – from the discreet and personalised check-in to the complimentary dry cleaning services and usage of the Equator Boardroom at your disposal. Be sure to have your complimentary breakfast, afternoon tea and evening cocktails at the lounge with a panorama of KL city in your company.

EQ, Equatorial Plaza, Jalan Sultan Ismail,
Kuala Lumpur, 50250 Kuala Lumpur



Reception



Premier Room



Equator Club