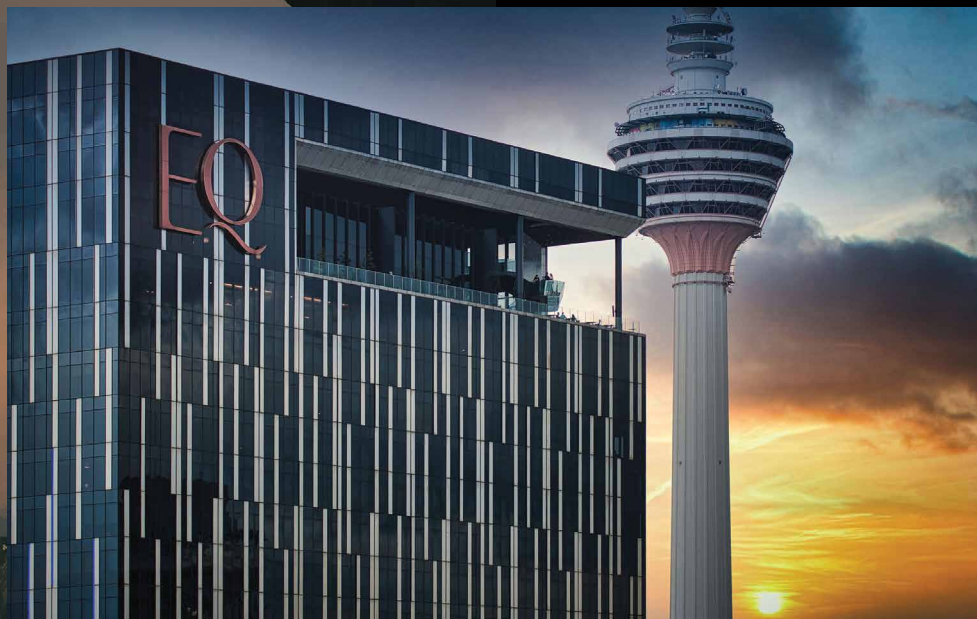


EQ

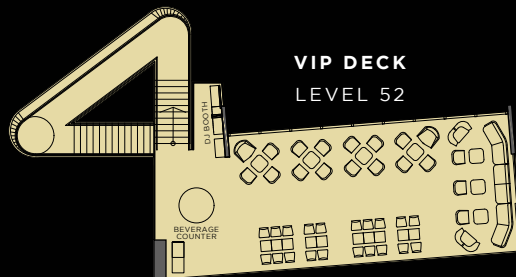
SKY51



SKY51

The eye-popping Sky51 is an entire floor dedicated to fine dining, fine wines, creative cocktails, and unrivalled views. Featured here: Sabayon, specialising in gourmet Continental cuisine, and Blue, an open-air rooftop lounge. The perfect space for a memorable experience.

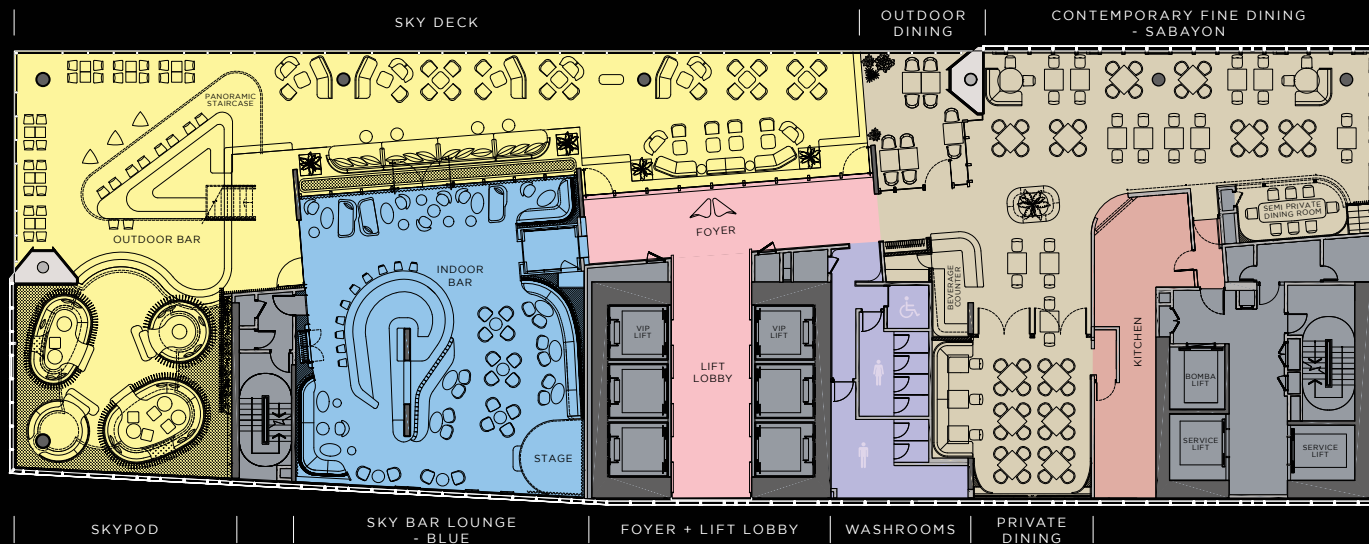




VIP DECK
LEVEL 52

LAYOUT AND SEATING CAPACITY

■ SABAYON Dining Room Private Room	CAPACITY (PAX) 58 24 - 30	■ BLUE Indoor Bar	CAPACITY (PAX) 50 - 55
■ VIP DECK Level 52	40	■ SKY DECK Outdoor Terrace SkyPod Outdoor Bar	50 - 55 35 - 40 40 - 50



BAR LOUNGE

The ambience of the lounge is trendy, inviting and just the place to unwind. The mood goes from mellow to upbeat during the weekends with live performances.



SKY DECK

The deck provides unbeatable panoramic views of the city, spanning from the KL Tower to the Petronas Twin Towers. Catch the mesmerising sunset over uniquely curated drinks and snacks.



VIP DECK

Sitting on the upper deck, it is the absolute venue for a party in private. Be spellbound by the city lights from way up here.





BLUE

The top bespoke outdoor rooftop bar at Sky51 offers tantalising snacks and handcrafted cocktails prepared by a team of seasoned mixologists. The picture-perfect skybar provides a view spanning from the KL Tower to the Petronas Twin Towers. Hold private events and celebrations at the VIP Deck, Level 52 and have a front-row seat of Kuala Lumpur's skyline.





Sabayan

Contemporary fine-dining reaches a whole new level – literally and lavishly. Elegant and dreamy high ceilings accented by copper and bronze tones are embodied by the stunning views of the Petronas Twin Towers and changing hues of the KL cityscape.

- Gold Award for Design Excellence in the Food and Beverage category by the MIID REKA Awards 2019
- Best of Award of Excellence in the Wine Spectator Restaurant Awards since 2020
- Tripadvisor Travellers' Choice Award: Best of the Best Top Picture-Perfect Restaurants – World 2021





CONTEMPORARY FINE DINING

The cuisine at Sabayon is the perfect combination of classic and contemporary. The carefully created prix fixe menu starts with the almost whimsical amuse-bouche and will reach a crescendo of flavours for the main course. Finally, the culinary journey ends with a decadent dessert.



PRIVATE DINING

For a more intimate occasion, a private affair, or perhaps just a peaceful space, our team will be happy to arrange a more personal dining experience for parties of any size. Give the special occasion that extra shine.



EQ
EQUATORIAL PLAZA, JALAN SULTAN ISMAIL
50250 KUALA LUMPUR, MALAYSIA
t 60 3 2789 7777 e info@kul.equatorial.com

EQUATORIAL.COM   [EQKUALALUMPUR](https://www.instagram.com/EQKUALALUMPUR)

